



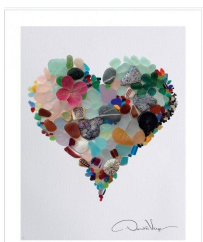
Trash to Art: Bin to Beauty The Great Outdoors

We have a new contest for the 2022 National Outdoor Ethics and Conservation Conference. We're looking for original and inspiring artwork from participants attending the conference either as an individual or a group. So, grab your art supplies, collect your micro trash, be creative and show us what you can do! 90% of your piece must be made from recyclable or trash material collected at home, school, and everyday life.

Entries will be judged on creativity, execution, use of micro trash/recycled materials, ability to transcend the materials from their original form, and overall aesthetic appeal. The NOEC awards panel will select a first, second and third place winner from all submissions.

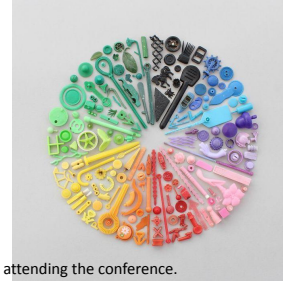
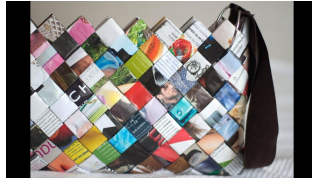
All mediums of art are encouraged including:

- Sculpture
- Collage
- Wearable Art (jewelry, hats, handbags, etc.)



Questions: Email enter name and email address here

Trash to Art: Bin to Beauty Contest Guidelines/Rules



- Participants must be attending the 2022 National Outdoor Ethics Conference.
- The art piece can be made by an individual or a group from the same council. A group constitutes 2+ people from the same council who are attending the conference.
- Each participant may contribute to only one individual and one group submission.
- The submission must relate to the theme of **The Great Outdoors**.
- 90% of the art piece must be made from micro trash/recyclables or trash material collected by the creator. All materials used must be clean, odor-free, non-perishable, non-toxic, and non-gas emitting (ex. No cigarette butts).
- Artwork may be any art medium: sculptures, collages, wearable art, etc.
- **All art pieces should not exceed 15"x 12"x 10"**. Any piece larger than this will be disqualified.
- Artwork must be family friendly in theme and physically safe (ex. no sharp objects).
- Submissions must be set up between 1:00 pm Thursday, November 10th and 9:00 am Friday, November 11th.
- Artwork must be free standing or have its own display system. Projects may not lean against a wall for judging. Please ensure that your project is sturdy and provide any necessary stands or display materials.
- Entrants are solely responsible for transportation and haul away (disposal) of artwork.
- Entries will be judged on creativity, execution, use of recycled materials, ability to transcend the materials from their original form, and overall aesthetic appeal.
- All submissions will be assigned a number at check-in so that it is a blind judging.

Trash to Art: Bin to Beauty Contest Submission Form

Artwork Title: _____

Name of Artist/Group: _____

Council: _____

Materials Used in Submission: _____

Assigned Number: _____

Complete this form and turn it in at the Registration Desk upon checking in. Submitted pieces will be assigned a number at this time by the contest coordinator and then you can display it in the designated area.

